

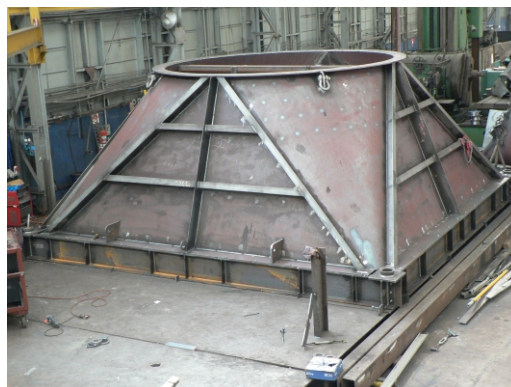
CONTACT TYPE ELECTRODE FOR WELDING OF MILD STEEL

Alloy Basis

Mn, Si, C

Characteristics :

SME A03 is a universal all-position welding electrode suitable for all types of low carbon steel. As a contact-type electrode, it requires no special skill to operate. It produces high-quality weld deposits with rapid metal deposition and a smooth quiet arc. The weld bead is uniform and of radiographic quality ensuring superior appearance and structural integrity.



Typical Applications

Ideal for welding applications in containers, ducts, air conditioning units, machine guards, pipelines, automotive bodies, chassis, steel doors and windows, storage tanks and general sheet metal work.

Mechanical Properties

Tensile Strength min : 45 kgf/mm²

Elongation min : 18%

Welding Current : AC, DCEP

Size (Ø mm)	2.50	3.15	4.00	5.00
Current (amps)	60 - 90	100 - 120	130 - 170	180 - 200

Availability:

Standard Size: 5.0, 4.0, 3.15, 2.50 in 350 mm length

Packing: 2 kg

Procedure

Clean the joint area thoroughly. Use the recommended current settings maintaining a short to medium arc with slight weaving. For thin sheets in vertical-down positions apply the skip welding technique to minimize heat distortion.